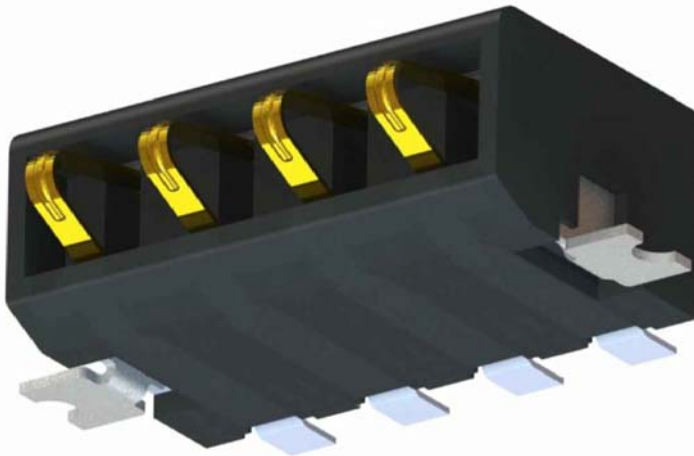


◆ 4 Pin Battery Connector 2.5mm Pitch



Ordering Information:
BTM15 - A4 - R 1 0 2 0
1

- 1.Plating Options
- 2-15u" Gold In Contact Area

Physical:

- ◆ Housing
High Temp Thermoplastic, UL94V-0, Black Color
- ◆ Terminal & Latch
Copper Alloy
- ◆ Terminal Plating
Gold Plating on Contact Area
Tin Plating on Solder Tails
Nickel Underplating Overall
- ◆ Latch Plating
Tin Plating Overall
Nickel Underplating Overall

Mechanical Specifications:

- ◆ Normal Force
0.55N at 0.9mm From Housing
- ◆ Durability
10000 Cycles
- ◆ Operating Temperature Rating
-40°C to +85°C

Electrical Specifications:

- ◆ Rated Voltage
12V DC
- ◆ Rated Current
2A Max.
- ◆ Contact Resistance
40 Milliohms Max. Initial
- ◆ Dielectric Withstanding Voltage
1000V AC Min for 1 Minute
- ◆ Insulation Resistance
500 Megohms Min.

