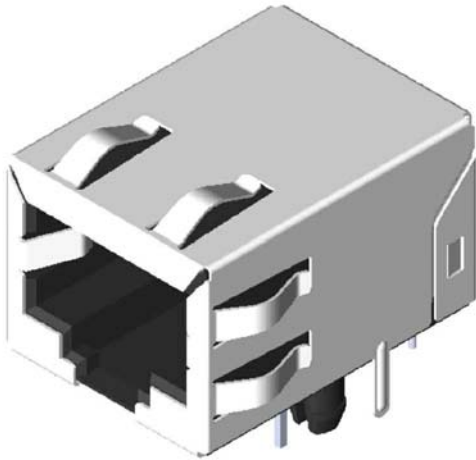


◆ RJ45 1x1 w/Transformer 1000 Base-T w/o LED



Ordering Information:

GDI47 - N3 - 1 0 0 2 3 0 0
1

1. Plating Options
 - 2-G/F In Contact Area
 - L-3u" Gold In Contact Area
 - k-6u" Gold In Contact Area
 - 7-15u" Gold In Contact Area
 - 9-30u" Gold In Contact Area

Physical:

- ◆ Plastic Housing & Transformer Housing
High Temp Thermoplastic, Black Color
- ◆ Terminal
RJ Contacts: Copper Alloy
RJ Solder Pins: Copper Alloy
- ◆ Terminal Plating
RJ Contacts:
Gold Plating on Contact Area
Tin Plating on Solder Tails
Nickel Underplating Overall
RJ Solder Pins:
Tin Plating Overall
Nickel Underplating Overall

◆ Shell

- Stainless
- ◆ Shell Plating
Pre-Soldering on Ground Legs

Mechanical Specifications:

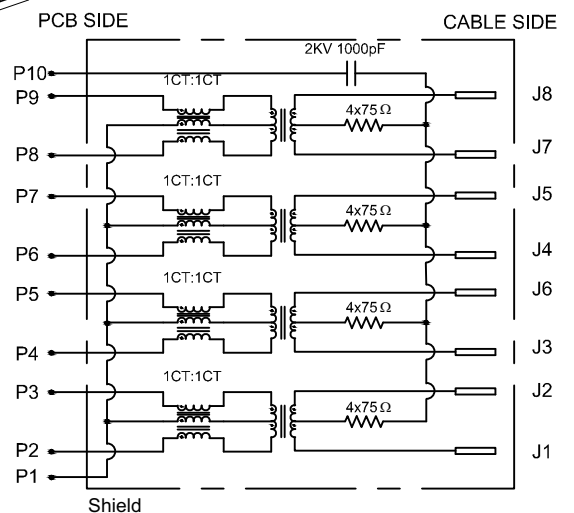
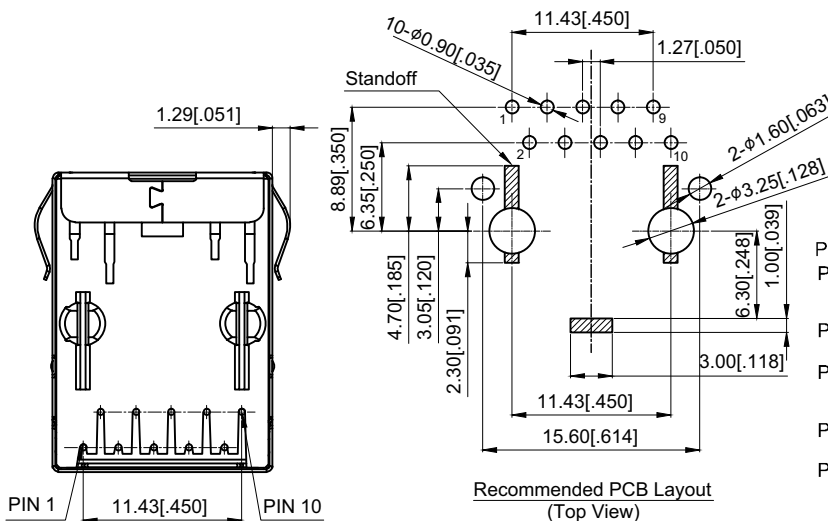
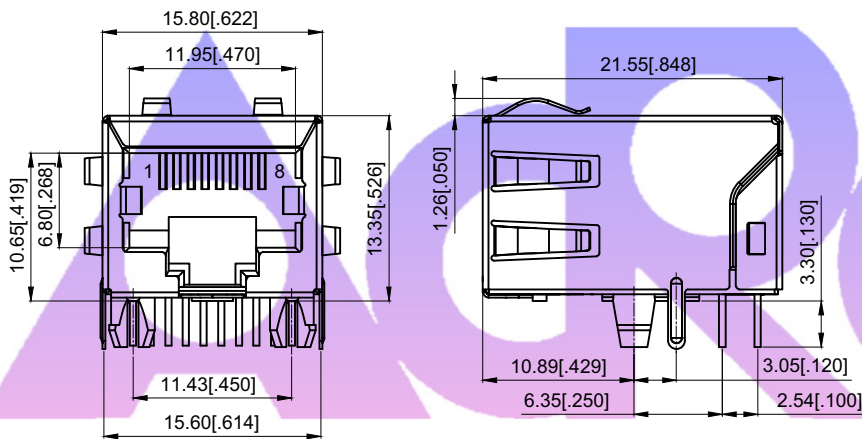
- ◆ Mate Force
22N Max.
- ◆ Durability
750 Cycles
- ◆ Operating Temperature Rating
0°C to +70°C

Electrical Specifications:

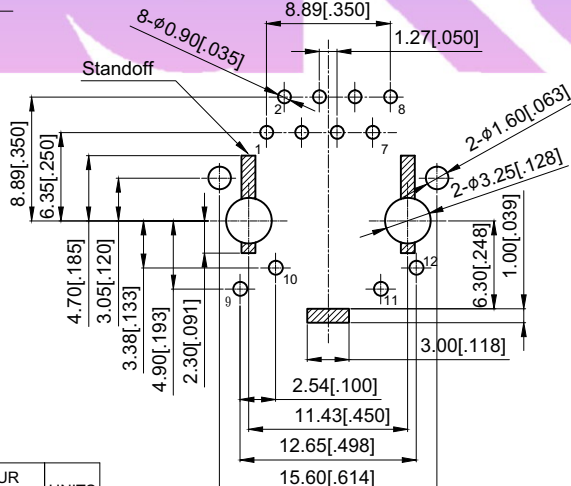
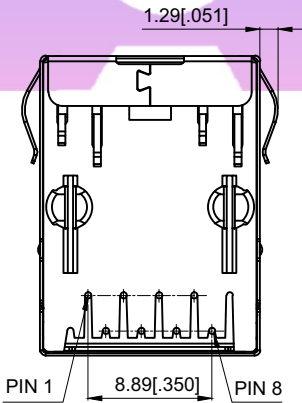
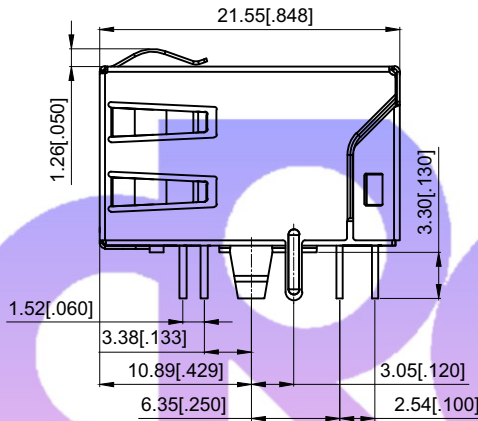
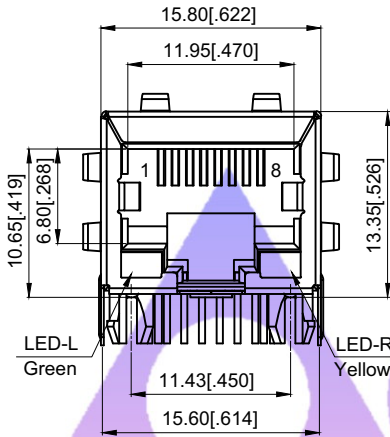
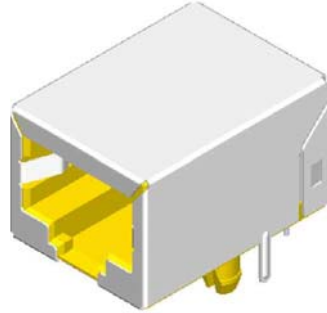
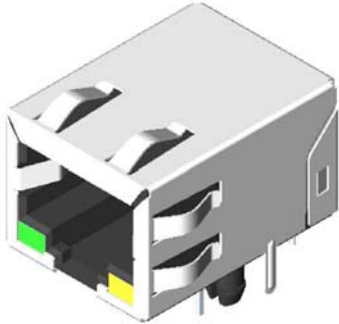
- ◆ Contact Resistance
50 Milliohms Max. Initial
- ◆ Dielectric Withstanding Voltage
500V per Second Max.
- ◆ Insulation Resistance
500 Megohms Min.

Magnetic Electrical Specifications:

- ◆ Transmitter & Receiver Filter:
Insertion Loss: @0.5-100 MHz: -1.15dB MAX.
Return Loss: @0.5-40 MHz: -18dB MIN.
@40.1-100 MHz: 12-20LOG(f/80)dB MIN.
- Cross Talk: @0.5-40 MHz: -35dB MIN.
@40.1-100 MHz: 33-20LOG(f/50)dB MIN.
- ◆ Hi-Pot Test: (J to P): 2250VDC, 1mA, 1SEC
(P to Shell): 500VDC, 1mA, 1SEC

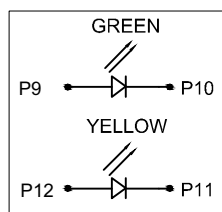


◆ **RJ45 1x1 w/Transformer 10/100 Base-T**



LED ELECTRICAL SPECIFICATION

PARAMETER	COLOUR		UNITS
	YELLOW	GREEN	
FORWARD CURRENT IF MAX	20	20	mA
REVERSE CURRENT IR MAX	10	10	uA
REVERSE VOLTAGE VR MAX	-5	-5	V
T OPERATURE TP	-20~+80	-20~+80	...
T SOLDERINGURE TS	260+/-5	260+/-5	...
POWER DISS. Pd	75	75	mW
NTENSITY IV MIN	28	28	MCD
PEAK WAVELENGTH	585	565	nM
FORWARD VOLTAGE TYP	1.7	1.7	V
FORWARD VOLTAGE MAX	2.6	2.6	V



Ordering Information:

GDI47 - N3 - * 8 3 2 3 0 0
1

- 1.Plating Options
- 2-G/F In Contact Area
- 7-15u" Gold In Contact Area
- 9-30u" Gold In Contact Area
- A-50u" Gold In Contact Area

Physical:

- ◆ Plastic Housing & Transformer Housing
- High Temp Thermoplastic,or PBT,UL94V-0 Rated, Yellow Color
- ◆ Terminal
- RJ Contacts:Copper Alloy
- RJ Solder Pins:Copper Alloy
- ◆ Terminal Plating
- RJ Contacts:
- Gold Plating on Contact Area
- Tin Plating on Solder Tails
- Nickel Underplating Overall
- RJ Solder Pins:
- Tin Plating Overall
- Nickel Underplating Overall
- ◆ Shell
- Stainless
- ◆ Shell Plating
- Pre-Soldering on Ground Legs

Mechanical Specifications:

- ◆ Mate Force
- 22N Max.
- ◆ Durability
- 750 Cycles
- ◆ Operating Temperature Rating
- 0°C to +70°C

Electrical Specifications:

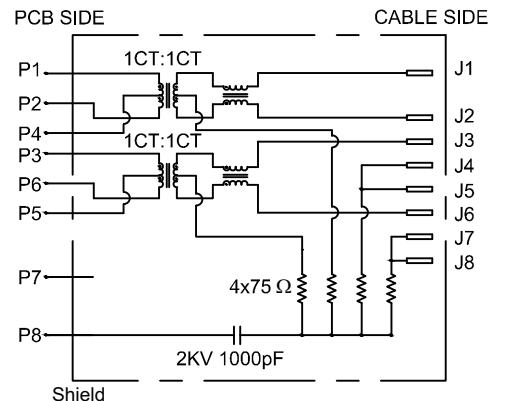
- ◆ Contact Resistance
- 50 Milliohms Max. Initial
- ◆ Dielectric Withstanding Voltage
- 500V per Second Max.
- ◆ Insulation Resistance
- 500 Megohms Min.

Magnetic Electrical Specifications:

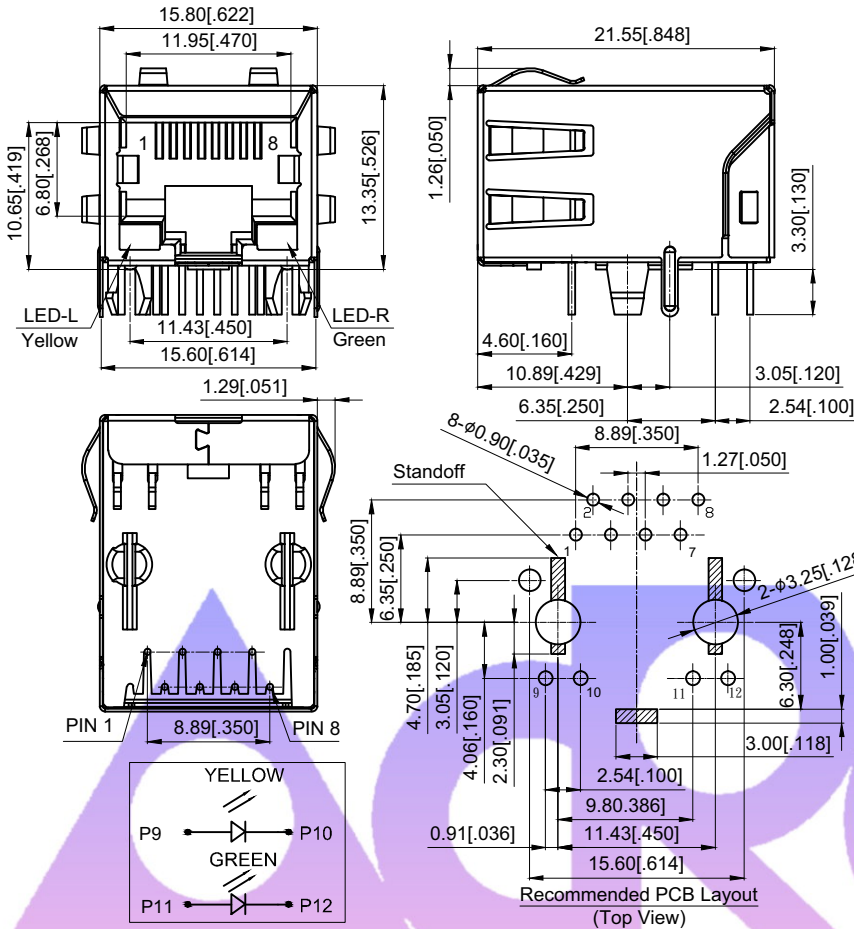
- ◆ Transmitter & Receiver Filter:

Insertion Loss (dB Max)	Return Loss at 100 Ω (dB Max)		
	1~30MHz	30~60MHz	60~80MHz
1~100MHz	-1.0	-18	-16

- ◆ Cross Talk:@1~100MHz: -30dB MIN.
- ◆ Commom Mode Rejection:@1~50 MHz: -20dB MIN.
@50~150 MHz: -15dB MIN.
- ◆ Hi-Pot Test:(J to P):2250VDC,1mA,1SEC
(P to Shell):2250VDC,1mA,1SEC
(LED to Shell):500VDC,1mA,1SEC



◆ **RJ45 1x1 w/Transformer 10/100 Base-T**



Ordering Information:

GDI47 - N3 - * 8 2 2 3 0 0

1

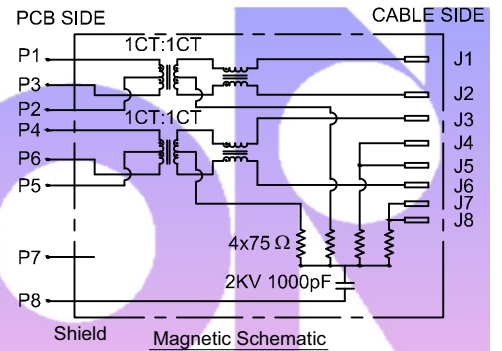
- 1. Plating Options
- 2. G/F In Contact Area
- 7-15u" Gold In Contact Area
- 9-30u" Gold In Contact Area
- A-50u" Gold In Contact Area

Magnetic Electrical Specifications:

◆ Transmitter & Receiver Filter:

Insertion Loss (dB Max)	Return Loss at 100 Ω (dB Max)		
1~100MHz	1~30MHz	30~60MHz	60~80MHz
-1.1	-18	-16	-12

- ◆ Cross Talk: @1~100MHz: -40dB MIN.
- ◆ Common Mode Rejection: @30~100 MHz: -35dB MIN.
- ◆ Rise Time: RS=100 Ohms and RL=100 Ohms
Output Voltage=1V Peak
Pulse Width=112ns
- ◆ Hi-Pot Test: (J to P): 2250VDC, 1mA, 1SEC
(P to Shell): 500VDC, 1mA, 1SEC
(LED to Shell): 2250VDC, 1mA, 1SEC



Ordering Information:

GDI47 - N3 - * 8 0 2 3 0 0

1

- 1. Plating Options
- 2. G/F In Contact Area
- 7-15u" Gold In Contact Area

Magnetic Electrical Specifications:

◆ Transmitter & Receiver Filter:

Insertion Loss (dB Max)	Return Loss at 100 Ω (dB Max)		
1~100MHz	1~30MHz	30~60MHz	60~80MHz
-1.0	-18	-16	-12

- ◆ Common Mode Rejection @1~100 MHz: -30dB Min.
- ◆ Cross Talk @1~100 MHz: -35dB Min.
- ◆ Inductance @100KHz/0.1V, 8mA DC Bias: 350mH Min.
- ◆ Hi-Pot Test: 1500Vrms, 60 Sec

