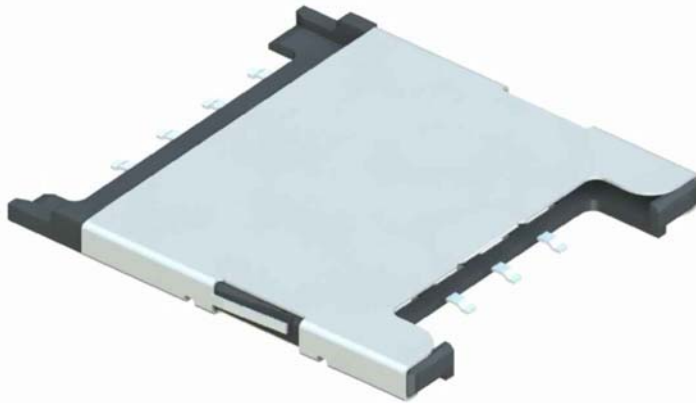


◆ 8 Pins 2.54mm Pitch with Shell SIM Card



**Ordering Information:**  
**SCM12 - N3 - 0 8 0 7 2**  
**1**

- 1.Plating Options  
◆ 7-15u" Gold In Contact Area  
**Physical:**  
◆ Housing  
High Temp Thermoplastic,94V-0 Rated,  
Black Color  
◆ Terminal  
Copper Alloy  
◆ Shell  
Copper Alloy  
◆ Terminal Plating  
Gold Plating on Contact Area  
Tin Plating on Solder Tail  
Nickel Underplating Overall  
◆ Shell Plating  
Gold Flash Plating on Solder tail  
Nickel Under Plating Over All

**Mechanical Specifications:**

- ◆ Normal Force  
0.3N/Pin Min.  
◆ Durability  
5000 Cycles  
◆ Operating Temperature Range  
-40°C to+85°C

**Electrical Specifications:**

- ◆ Rated Voltage  
50V DC Max.  
◆ Rated Current  
0.2A Max.  
◆ Contact Resistance  
40 Milliohms Max. Initial  
◆ Dielectric Withstanding Voltage  
500V AC Min for 1 Minute  
◆ Insulation Resistance  
1000 Megohms Min.

