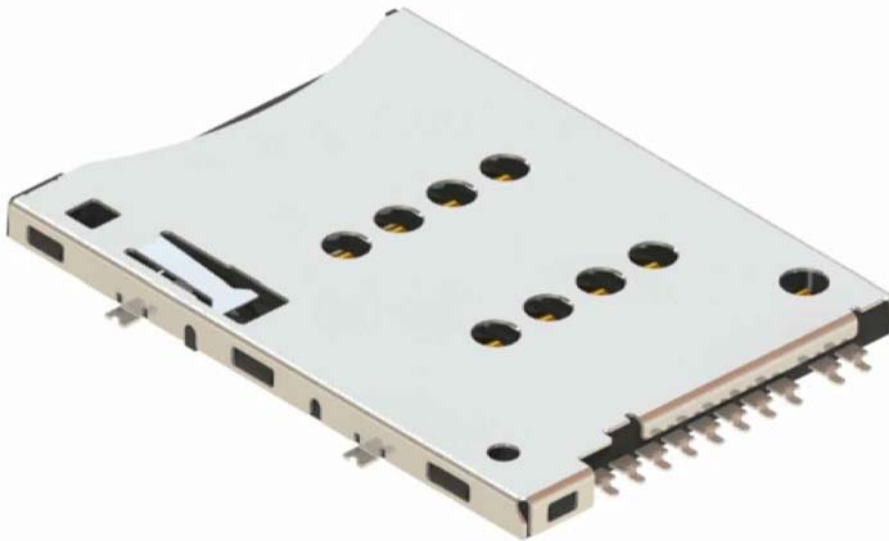


◆ 8 Pins 1.27mm Pitch Push-Push Type SIM Card



**Ordering Information:**  
**SCM16 - N3 - 0 8 2 7 1 1 0**  
**1**

- 1.Plating Options  
K-6u" Gold In Contact Area  
7-15u" Gold In Contact Area

**Physical:**

- ◆ Housing  
High Temp Thermoplastic,94V-0 Rated, Black Color
- ◆ Terminal  
Copper Alloy
- ◆ Shell  
Stainless Steel
- ◆ Slider  
High Temp Thermoplastic,94V-0 Rated, Natural Color
- ◆ Crank-Axle:Stainless Steel
- ◆ Coil Spring:Stainless Steel
- ◆ Terminal Plating  
Gold Plating on Contact Area  
Gold Plating on Solder Tail  
Nickel Underplating Overall
- ◆ Shell Plating  
Gold Flash Plating on Solder tail

**Mechanical Specifications:**

- ◆ Insertion/Extraction Force  
30N Max./0.5N~3.0N
- ◆ Durability  
5000 Cycles
- ◆ Operating Temperature Range:  
-40°C to +85°C

**Electrical Specifications:**

- ◆ Rated Voltage  
50V DC Max.
- ◆ Rated Current  
0.2A Max.
- ◆ Contact Resistance  
60 Milliohms Max. Initial
- ◆ Dielectric Withstanding Voltage  
500V AC Min for 1 Minute
- ◆ Insulation Resistance  
1000 Megohms Min.

COMMCTOR TERMINAL NO.	PIN NO.
C1	VCC
C2	RST
C3	CLK
C4	DATO
C5	GND
C6	VPP
C7	I/O
C8	MCMD
C9	CARD Detect Switch
C10	CARD Detect Switch
C11-C14	GND

