

◆ 6 Pins 2.54mm Pitch with Switch SIM Card, Normal Open

**Ordering Information:**  
**SCM22 - N3 - 0 6 0 7 1 1 0**  
**1**

1. Plating Options  
7-15u" Gold In Contact Area

**Physical:**

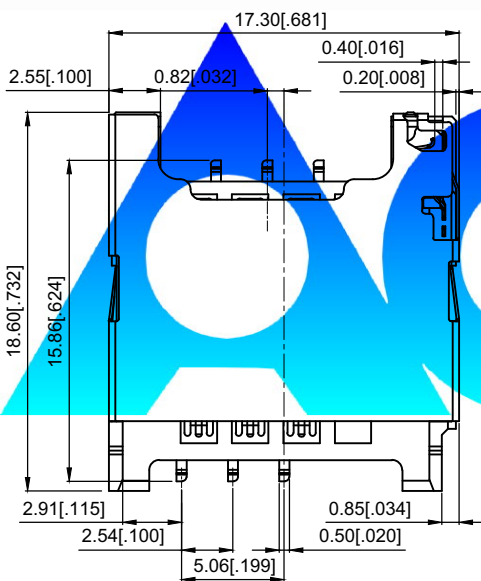
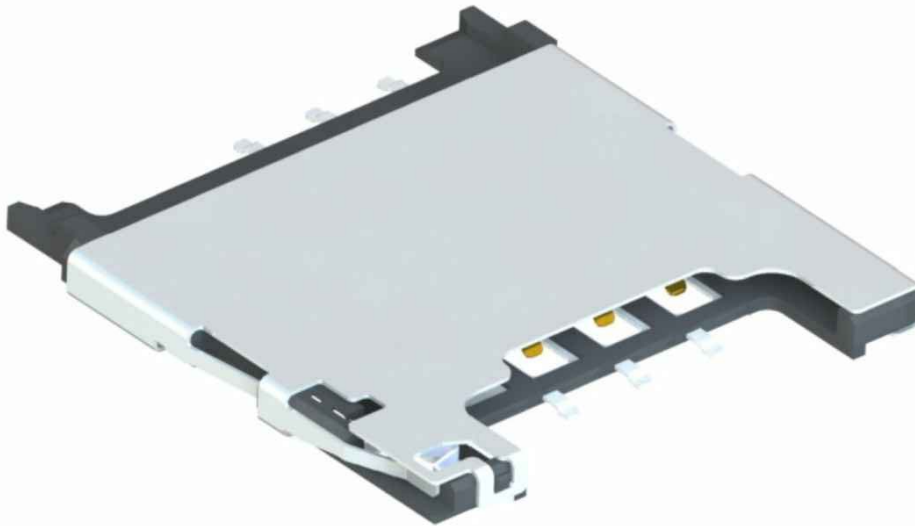
- ◆ Housing:  
High Temp Thermoplastic, 94V-0 Rated, Black Color
- ◆ Terminal  
Copper Alloy
- ◆ Shell & Switch Contact  
Copper Alloy
- ◆ Terminal Plating  
Gold Plating on Contact Area  
Tin Plating on Solder Tails  
Nickel Underplating Overall
- ◆ Shell Plating  
Gold Flash on Solder Tails  
Nickel Underplating Overall
- ◆ Switch Contact Plating  
Gold Flash Plating on Contact Area

**Mechanical Specifications:**

- ◆ Normal Force  
0.3N/pin Min.
- ◆ Durability  
5000 Cycles
- ◆ Operating Temperature Range  
-40°C to +85°C

**Electrical Specifications:**

- ◆ Rated Voltage  
50V DC Max.
- ◆ Rated Current  
0.2A Max.
- ◆ Contact Resistance  
40 Milliohms Max. Initial
- ◆ Dielectric Withstanding Voltage  
500V AC Min for 1 Minute
- ◆ Insulation Resistance  
1000 Megohms Min.



Connector Terminal No.	Pin No.
P1	VCC
P2	RST
P3	CLK
P4	GND
P5	VPP
P6	I/O
P7~P10	CARD Detect Switch
P11	CARD Detect Switch

