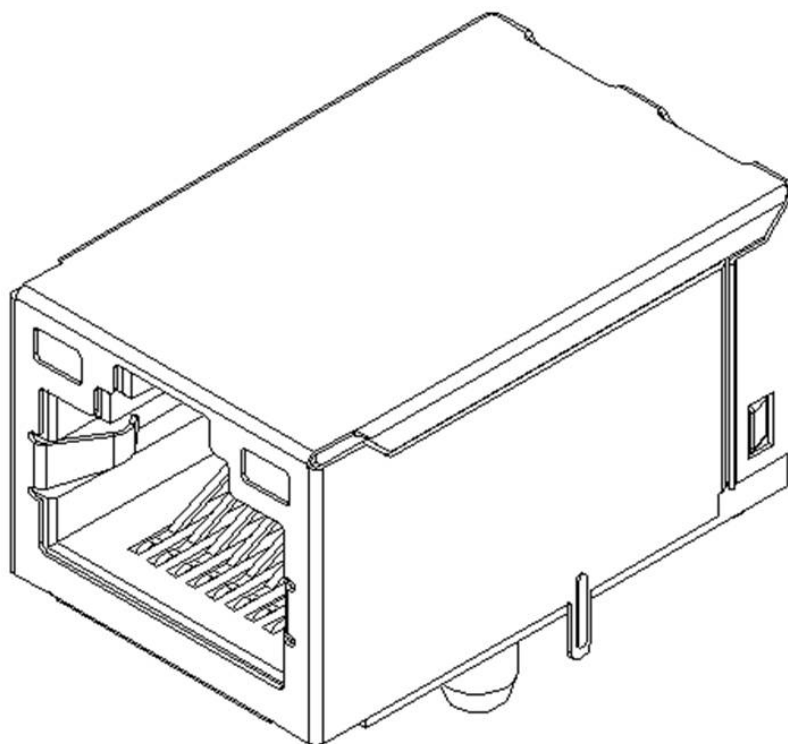




PRODUCT SPECIFICATION



育鼎精密工業股份有限公司
ACRON PRECISION INDUSTRIAL CO., LTD

桃園縣八德市廣德里新興路 55 號

No.55, SinSing Road., Bade City, Taoyuan County 334, Taiwan(R.O.C)

TEL : 886-3-3629889 FAX : 886-3-3664917

☐ 東莞睦永電子有限公司
(AMMI)

☐ 東莞育鼎電子有限公司
(ACRON)

☒ 東莞愷興電子科技電子有限公司
(NUCONN)

REVISION:	ECR/ECN INFORMATION:		PRODUCT NO	GDI38 SERIES	SHEET No
A	DATE:	NEW SPEC 2013/10/29	PRODUCT NAME	RJ45 Tab Up 10/100 BASE-T	1 of 6
DOCUMENT NUMBER: PS-GD-0024		CREATED / REVISED BY: ANDELEE.YANG		CHECKED BY: JERRY.TUNG	APPROVED BY: KIMI.HSU



PRODUCT SPECIFICATION

1.0 SCOPE

This Product Specification covers the performance requirements for Tab up RJ45 10/100 Base-T connector series.

2.0 PRODUCT DESCRIPTION

2.1 PRODUCT NAME AND SERIES NUMBER(S)

Tab up RJ45 10/100 BASE-T series. Nuconn part No: GDI38 SERIES

2.2 PLATING SPECIFICATION TO EXPLAIN

See appropriate sales drawings.

2.3 DIMENSIONS, MATERIALS, PLATINGS AND MARKINGS

See appropriate sales drawings for details on dimensions ,materials , plating and markings.

2.4 SAFETY AGENCY APPROVALS

See appropriate sales drawings

3.0 APPLICABLE DOCUMENTS AND SPECIFICATIONS

Please refer to the Sales Drawings , and other sections of this Specification for specific references to applicable documents and specifications. In cases where the Product Specification differs from the Sales Drawings, the Sales Drawing will take precedence

EIA-364 TEST METHODS FOR ELECTRICAL CONNECTORS

4.0 RATINGS

4.1 TEMPERATURE

Operating Temperature Range: - 40°C to + 85°C

Storage Temperature Range: - 40°C to + 85°C

REVISION:	ECR/ECN INFORMATION:		PRODUCT NO	GDI38 SERIES	SHEET No
A	DATE:	NEW SPEC 2013/10/29	PRODUCT NAME	RJ45 Tab Up 10/100 BASE-T	2 of 6
DOCUMENT NUMBER: PS-GD-0024		CREATED / REVISED BY: ANDELEE.YANG		CHECKED BY: JERRY.TUNG	APPROVED BY: KIMI.HSU



PRODUCT SPECIFICATION

5.0 PERFORMANCE

Item	Test Items	Requirement	Procedures
1	Examination of Product	Meets requirements of product drawing. No physical damage.	Visual, dimensional and functional per applicable quality inspection plan.

Electrical Requirements

2	Low Level Contact Resistance	50 mΩ max initial ΔR = 50 mΩ max final	Mate subject connector with compatible connector. EIA-364-23B
3	Insulation Resistance	500 MΩ min initial 50 MΩ min final	Apply 100±10% Volts DC between adjacent contacts of mated connectors for one minute. EIA-364-21
4	Dielectric Withstanding Voltage	No discharge, flashover or breakdown. Current leakage: 1 mA max	For mated specimens, 2250VDC between connected RJ interface contacts and all PCB tails connected together with shield. 1 milliamp ere cutoff current, 500 Volts per second maximum ramp. EIA-364-20

Mechanical Requirements

5	Mating and Un-mating Forces	Insertion Force:22N max Unlatched Withdrawal Force: 22N max	Measure force necessary to mate and un-mate connectors using the free floating fixtures at rate of 25mm/min. EIA-364-05B
6	Solder ability	Wetting must occur over at least 95% of the solder immersion surface	Solder 240°C±2°C; Immersion depth 2mm; Immersion time 3S
7	Durability	750 cycles with no function damage for RJ-45. Low Level Contact Resistance: ΔR = 50 mΩ max final	The sample should be mounted in the tester and fully mated and unmated 750 times per hour at the rate of 25mm/min. EIA-364-09C

REVISION:	ECR/ECN INFORMATION:		PRODUCT NO	GDI38 SERIES	SHEET No
A	DATE:	NEW SPEC 2013/10/29	PRODUCT NAME	RJ45 Tab Up 10/100 BASE-T	3 of 6
DOCUMENT NUMBER: PS-GD-0024			CREATED / REVISED BY: ANDELEE.YANG	CHECKED BY: JERRY.TUNG	APPROVED BY: KIMI.HSU



PRODUCT SPECIFICATION

8	Random Vibration	No electrical discontinuity greater than 1μsecond. Shall meet visual requirements, and show no physical damages.	The electrical load condition shall be 100mA maximum for all contacts. Subject to a simple harmonic motion having amplitude of 0.76mm (1.52mm maximum total excursion) in frequency which being varied uniformly between the approximate limits of 10 and 55 Hz. The entire frequency range, from 10 to 55 Hz and return to 10 Hz, shall be traversed in approximately 1 minute. This motion shall be applied for 2 hours in each of three mutually perpendicular directions. EIA-364-28D
---	------------------	--	--

Environment Requirements

9	Thermal Shock (Simulate Non-Operating State)	ΔR: 50mΩ max (change from initial) & Appearance: no damage	Subject mated connectors to 100 cycles between -40°C and 85°C, 30 minutes duration at both temperature extremes. EIA-364-32C
10	Humidity-Temperature Cycling	ΔR: 50mΩ max (change from initial) & Appearance: no damage	Mated connectors placed in humidity chamber (Humidity 80-98%, Temperature 20-65°C) for 500 Hrs. EIA-364-31B, Method IV, Except 7a
11	Temperature Life (Heat Aging)	ΔR: 50mΩ max (change from initial) & Appearance: no damage	Subject mated connectors to temperature life at 85°C for 500 hours. EIA-364-17B, Method A
12	Temperature Life (Cold Aging)	ΔR: 50mΩ max (change from initial) & Appearance: no damage	Subject mated connectors to temperature life at -40°C for 500 hours EIA-364-17B, Method A
13	Salt Spray	ΔR: 50mΩ max (change from initial) & Appearance: no damage	24hours Atmosphere: salt spray from a 5% solution. Temperature: 35 ±1/-2°C EIA 364-26

REVISION:	ECR/ECN INFORMATION:		PRODUCT NO	GDI38 SERIES	SHEET No
A	DATE:	NEW SPEC 2013/10/29	PRODUCT NAME	RJ45 Tab Up 10/100 BASE-T	4 of 6
DOCUMENT NUMBER: PS-GD-0024			CREATED / REVISED BY: ANDELEE.YANG	CHECKED BY: JERRY.TUNG	APPROVED BY: KIMI.HSU

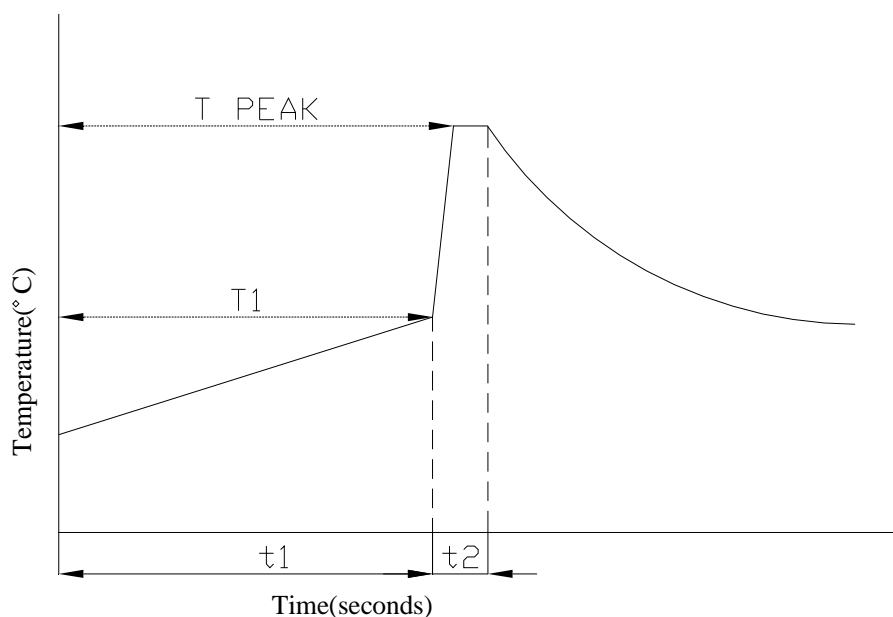


PRODUCT SPECIFICATION

6.0 PACKAGING

Parts shall be packaged to protect against damage during handling, transit and storage. See packaging appropriate drawings

7.0 RECOMMENDED WAVE SOLDERING PROFILE



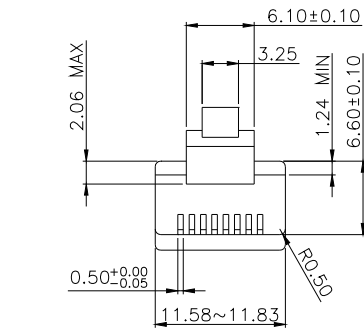
PARAMETER	REFERENCE	LEAD FREE SPECIFICATION
PREHEAT TEMPERATURE GRADIENT		+1~4°C/sec
PREHEAT TIME	t1	70 sec
PREHEAT TEMPERATURE	T1	100~120°C
SOLDER POT TEMPERATURE	T PEAK	260°C
DWELL TIME	t2	5 SEC
PEAK BOARD TOP TEMPERATURE		190°C
COOLING TEMPERATURE GRADIENT		-6°C/SEC MAX.

REVISION:	ECR/ECN INFORMATION:		PRODUCT NO	GDI38 SERIES	SHEET No
A	DATE:	NEW SPEC 2013/10/29	PRODUCT NAME	RJ45 Tab Up 10/100 BASE-T	5 of 6
DOCUMENT NUMBER: PS-GD-0024		CREATED / REVISED BY: ANDELEE.YANG		CHECKED BY: JERRY.TUNG	APPROVED BY: KIMI.HSU

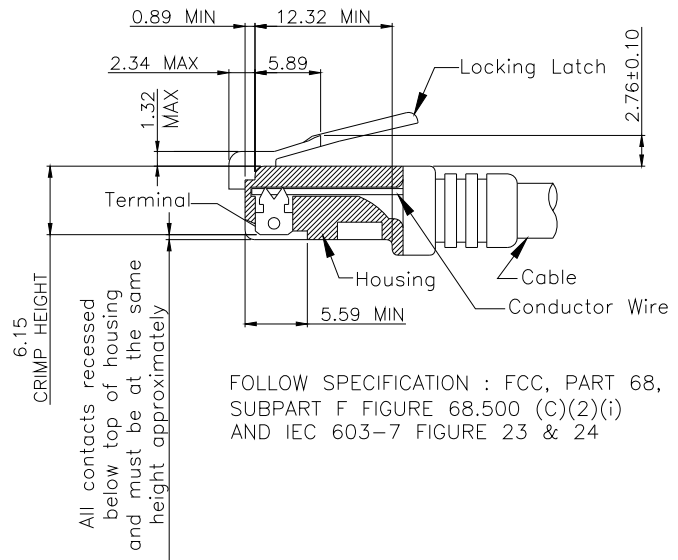
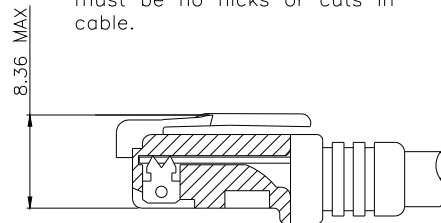


PRODUCT SPECIFICATION

8.0 RECOMMENDED RJ PLUG SPECIFICATION



* There must be no damage to housing or locking latch. There must be no nicks or cuts in cable.



FOLLOW SPECIFICATION : FCC, PART 68, SUBPART F FIGURE 68.500 (C)(2)(i) AND IEC 603-7 FIGURE 23 & 24

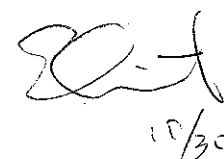
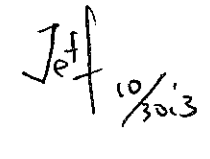

FOLLOW SPECIFICATION : FCC, PART 68, SUBPART F FIGURE 68.500 (C)(2)(ii)

REVISION:	ECR/ECN INFORMATION:		PRODUCT NO	GDI38 SERIES	SHEET No
A	DATE:	NEW SPEC 2013/10/29	PRODUCT NAME	RJ45 Tab Up 10/100 BASE-T	6 of 6
DOCUMENT NUMBER: PS-GD-0024			CREATED / REVISED BY: ANDELEE.YANG	CHECKED BY: JERRY.TUNG	APPROVED BY: KIMI.HSU

A



文件制訂、修訂、廢止申請單

文件編號	PS-612-0024	文件名稱	GB138-Series		
申請部門	研發部	申請人	An Hec	日期	10.30.2017
制訂單位	研發部	制訂人	An Hec	日期	10.30.2017
<input checked="" type="checkbox"/> 制訂 <input type="checkbox"/> 修訂 <input type="checkbox"/> 廢止原因說明	New spec (Rev A)				
相關單位審查	<div style="text-align: right;">  10/30  10/30/13 </div>				
核准	 10/30				